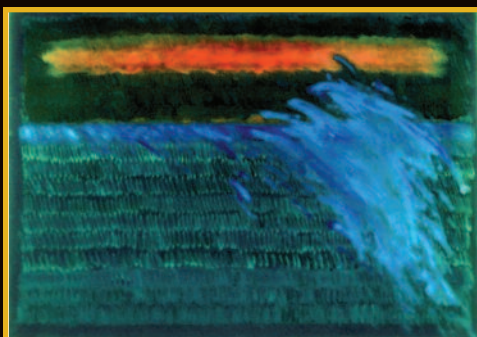


Ask for our  
Current Price List  
or visit [www.arifkin.com](http://www.arifkin.com)

# A. RIFKIN Co.

Established 1892



## Museum | Art Gallery Catalog



# Reusable Fabric Security Bags for Museums

*As priceless as the items they protect!*



As curators for the world's most valuable and irreplaceable items, your responsibilities are momentous. One lost document or forged piece of artwork can represent millions of dollars in potential damage. The wide assortment of Rifkin products in this museum-specific catalog can dramatically help in your pursuit of providing complete security protection for all your entrusted valuables. In addition to priceless artwork and exhibit materials, thousands of Rifkin security bags are used to simply collect and organize monies from admissions, gift shops and concessions.

A. Rifkin Co. is the world-leading manufacturer of reusable locking and Keyless Security™ bags. Our products offer proven security protection to over 30,000 customers including the

federal government, Fortune 500 companies and most of the world's largest financial institutions.

## Advanced Security and Asset Tracking for Museums

As the value of the items you protect increases, so must the complexity of the security solution. Rifkin offers the industry's most advanced museum security products. Some of our bags even include design features that protect contents from fire and allow for real-time satellite tracking of your asset.



# keyless security

## RIFKIN KEYLESS

**SECURITY™** bags use uniquely numbered, single-use seals and a patented zipper chamber to provide documented evidence that the contents of the bag remain secure during storage and transport. All bags equipped with Rifkin's Keyless Security™ option provide clear evidence if the bag contents have been compromised. The very presence of the Keyless Security™ chamber keeps most would-be "snoops" looking for an easier target.



U.S. Patent Pending

### TO SECURE BAG:

- Pull the zipper completely closed. Hold chamber lid at a 45° angle, push back and down until it snaps into place.
- To lock, insert seal's twin arrowheads into the two small rectangular openings and push until they click into place.



U.S. Patent Pending

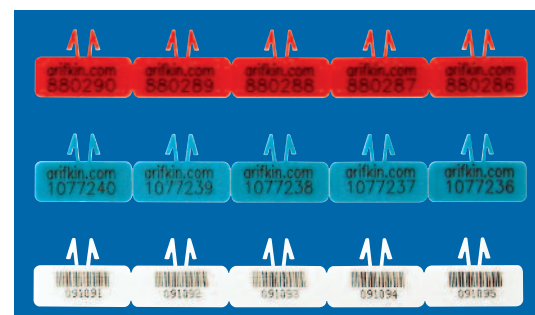
### TO OPEN BAG:

- Confirm the seal has not been broken or tampered with during transport.
- To open, using the indent under the red seal, lift seal until it breaks.
- Then using the second indentation, lift up the chamber and unzip bag.

## CHAMBER SEALS

- Tamper evident seals for all Rifkin bags fitted with our chamber technology.
- Red and Blue seals are numbered; white seals are also bar coded.
- All seal numbers are unique and non-duplicated.

U.S. Patent Pending



ORDERS & INQUIRIES TOLL FREE 800.458.7300 | FAX 800.825.8284 | VISIT OUR WEB SITE AT [www.arifkin.com](http://www.arifkin.com)





Please note that we can custom-manufacture larger bags to accommodate your collection or add foam padding to protect valuable contents in transit. Contact our Customer Service Department to discuss any specific needs you may have or to request a quote.



### KEYLESS SECURITY™ TRANSPORT BAGS

Our most popular bag for secure transport of artwork or documentation comes in three standard sizes. Made from the durable Arco 600™, all bags feature a security window designed so that cards are inserted from the inside of the bag. Bags include a double-sided routing card where chain of custody and seal numbers can be recorded. Embroidered identification is also available for Keyless Security™ Transport Bags for an additional charge per bag.

### SECUR-A-FILE™ (KEYLESS SECURITY™)

Provides keyless, tamper-evident protection of your confidential documents, store your sensitive paperwork along with non-sensitive files in any filing cabinet. Designed for legal size file cabinets. Large capacity for thick files or printouts. Heavy-duty coated suspension rods.

U.S. Patent No. 6039473



### ROLLING SUPPLY BAGS WITH KEYLESS SECURITY™

Pack up to 50 pounds of high value art, paperwork or collectibles into a bag, insert the Keyless Security™ seal, extend handle and wheel it wherever you need it. Inline skate wheels provide skid protection. Flip-top design allows full access to contents.

**2-Wheel Style** When this 14" x 19" x 14" bag is not in use, telescoping handle system hides below for easy storage. Feet on bag end/bottom so bag can be rested or stored in standing position. Comfort grip handles on the bag make it easier to pick up and can attach together to keep straps from dragging. Nassau Blue Bag includes security window (FWNP006) to hold a 3" x 5" ID card or tag.



U.S. Patent  
No. 7273139

**4-Wheel Style** Easy to maneuver 15" x 19" x 15" bag with four-wheel design. Allows contents to stay flat in transit. Retractable pull handle stops at a 45 degree angle - no stooping to retrieve handle. Nassau Blue Bag includes security window (FWNP006) on front of bag to hold a 3" x 5" ID card or tag.



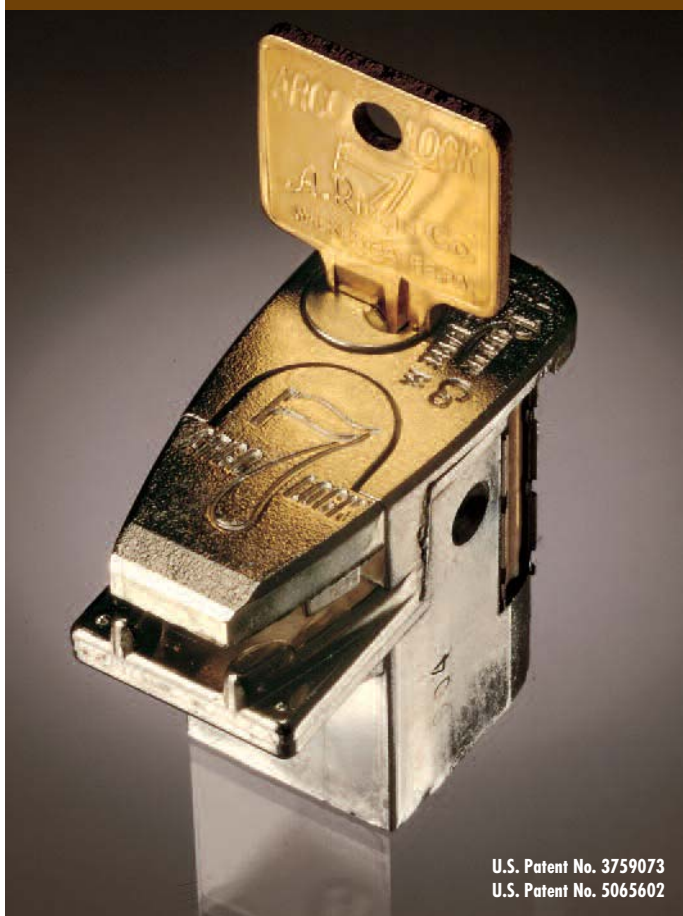
See [www.arifkin.com](http://www.arifkin.com) for details about Keyless Security™ Light Duty Courier Bags, or MailSafe™ Pouches for high security mailings through the USPS.

ORDERS & INQUIRIES TOLL FREE 800.458.7300 | FAX 800.825.8284 | VISIT OUR WEB SITE AT [www.arifkin.com](http://www.arifkin.com)



# arcolock-7

## MAXIMUM SECURITY

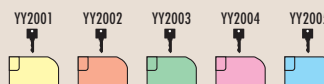


U.S. Patent No. 3759073  
U.S. Patent No. 5065602

**Rifkin's Arcolock-7®** keyed bags are the #1 selling brand of security bags for government and financial institutions. Seven decades of research and continual improvement make these storage and transport bags the most reliable on the market. The Rifkin seven-pin tumbler lock mechanism is virtually pick-proof and is compliant with federal security regulations for transporting classified documents. Additionally, we offer keying options for more confident management of your secure transport operations.

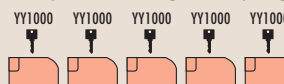
### KEYED DIFFERENTLY

Keyed differently, each bag has its own key, different from all others, with no interchanges.



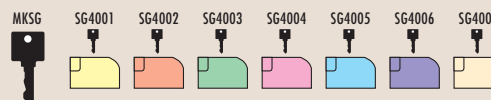
### KEYED ALIKE

When Arcolock-7's are keyed alike, a single key pattern ("bitting") allows all key holders to open every bag in the system.



### MASTER-KEYED

In master-keyed systems, each bag has its own key which is independent of other locks in the system. However, a single key opens all locks in that system.



### EMERGENCY KEY REPLACEMENT SERVICE

Replacement keys are forwarded within 48 hours in cases of emergency. Large quantity key orders may take longer. (Please specify key number which is stamped on key and base of lock.)

KEYED DIFFERENTLY LOCKS	_____	included in Sac Price.
KEYED ALIKE LOCKS	_____	included in Sac Price.
MASTER KEYED LOCKS	_____	additional per Sac.
REPLACEMENT KEYS	_____	additional per Sac.
MASTER KEYS	_____	additional per Sac..

**MADE EXCLUSIVELY FOR  
A. RIFKIN COMPANY**



# safety sac



## **SAFETY SAC® WITH ARCOLOCK-7®**

Our high-security, fabric, lock bag is perfect for protecting cash and other valuables. Trusted by financial institutions and other cash handling businesses throughout the country to safely move currency and valuables from collection points to central counting. May also be used to store or transport valuable items from your collections. Windows for ID tags or cards as shown are available at an additional charge. See page 9 for details.

# heavy duty



## **HEAVY-DUTY COURIER WITH ARCOLOCK-7®**

Perfect for securely transporting large volume of papers, or other bulky valuables. Sturdy webbing handles, reinforced side panels and bottom with brass plated studs. Built-in Arcolock-7® makes this bag secure. All Arcolock-7® options available. (Details on pages 4.)

For Identification, Courier Sacs may be embroidered or imprinted. (Certain minimums apply for free imprinting. See page 9 for details.) If no identification is specified, a Twin Window will be supplied.

**For transport of valuable or original materials, consider a  
RIFKIN FIRE-SHIELD COURIER BAG. See our website for details.**

## **STOCK**

We maintain a limited stock of our more popular items for prompt shipment to our customers. Normal shipment of Stock Bags will be 3 days from receipt of order. We have shown several of our stock bags in this catalog. For additional styles and further details, please visit our website at [www.arifkin.com](http://www.arifkin.com). Pricing on All Stock Bags with Arcolock-7® includes random keyed different lock. See website for information about additional charges for other keying systems.

### **SAFETY SAC® w/ ARCOLOCK-7®**

Available from Stock  
for quick shipment!



All Stock Safety Sacs available in  
Red (07), Emerald Green (42),  
Nassau Blue (NB), Black (04)  
and Yale Blue (YB) only.

### **HEAVY DUTY COURIER SACS w/ ARCOLOCK-7®**

with Twin Window  
(see page 9)







**ARCOTRACK II™**  
Discreet, Reliable, Accurate, and Affordable

Featuring SiRF Star III Technology for extra-sensitive reception outdoors, indoors and through metal. Our WAAS-enabled receiver provides GPS signal corrections, giving better position accuracy. How much better? On average up to five times better! A WAAS-capable receiver can give you a position accuracy within 3 meters 95 percent of the time. ArcoTrack II™ GPRS provides real-time navigation in urban canyons, as well as high sensitivity acquisition needed for indoor use.



YOU MOVE - WE TRACK - ARCOTRACK II™



**ORDERS & INQUIRIES TOLL FREE 800.458.7300 | FAX 800.825.8284 | VISIT OUR WEB SITE AT [www.arifkin.com](http://www.arifkin.com)**



# arcotrack

## ARCOTRACK II™ CUTTING EDGE MAPPING TECHNOLOGIES

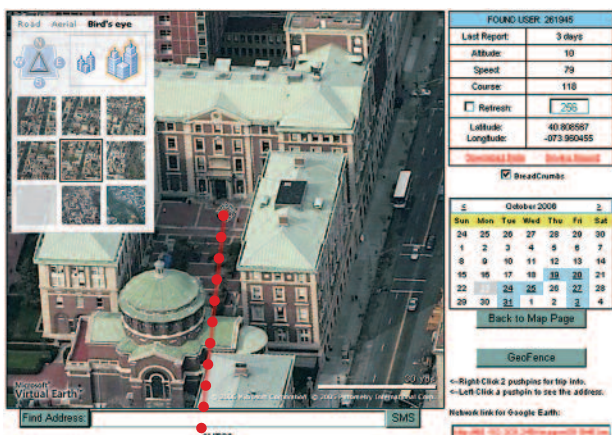
ArcoTrack II™ uses the latest, cutting edge mapping technologies from Google and Microsoft. This state-of-the-art combination of 3D maps, satellite images, and aerial photography covers the entire planet. Users can print out reports containing street addresses, set geo-fences or perimeters, anywhere, using this latest mapping technology. Mapping goes down to street level and can pinpoint physical locations virtually anywhere.

## PROFESSIONAL BAG TRACKING

ArcoTrack II™ is easily concealed inside a bag yet is still able to transmit position information necessary to monitor, track and trace cash, documents, or valuable artwork. ArcoTrack II™ plus a secure locked bag combines a barrier environment that denies or delays thieves from gaining access to the contents with a tracking/alert device providing continued protection as your valuables travel.



## ARCOTRACK II™ GPRS BASED GPS UNIT





### PULL SEALS

These easy-to-use seals adjust quickly to the position needed. Self-locking – they must be cut to be removed. Insert end of seal through side marked “Entrada.”

**S90052** Overall length is approximately 5.5”, includes random, unduplicated numbering molded in high relief.

**S90082** Overall length is approximately 8.37”, includes random, unduplicated numbering molded in high relief.



**ALL RIFKIN SECURITY SEALS ARE EASY-TO-USE AND PROVIDE A VISUAL DETERRENT TO WOULD-BE SNOOPS AND CLEAR EVIDENCE OF ANY TAMPERING.**

### ARCO ID™ TAMPER-EVIDENT LABELS

These 1” x 3” seals are easy to apply, easy to remove and leave no residue. Tamper Evident Labels can be used on cash boxes, file cabinet drawers, computer hard drives and more.



### KEYLESS SECURITY™ MINI PADLOCK KEYLESS SECURITY™ SEALS FOR MINI PADLOCK

Standard padlock keys and combinations can be stolen but there is no way to open a Rifkin Mini Padlock without leaving evidence that the contents have been breached. A broken, missing or different numbered seal indicates that your property was opened.



**ORDERS & INQUIRIES TOLL FREE 800.458.7300 | FAX 800.825.8284 | VISIT OUR WEB SITE AT [www.arifkin.com](http://www.arifkin.com)**





### JUMBO CASH BOX

Keep larger denomination bills and checks out of sight. Extra deep cash box features a standard size 7-compartment tray which can slide back and forth to expose storage area below.

Visit our website at [www.arifkin.com](http://www.arifkin.com)  
to see our wide range of  
cash trays and related items.



## CUSTOM PERSONALIZATION

### CUSTOM EMBROIDERY

Embroidered identification is FREE on all bags with an Arcolock-7®, and on the Rolling Supply Bag with Keyless Security™ (page 3). For all other non-locking bags or Keyless Security™ Bags, embroidered identification is available at an additional charge per bag. Bags made of Nylon and Leatherette may be imprinted only.

### CUSTOM SILK SCREEN IMPRINTING FOR BAGS WHICH INCLUDE AN ARCOLOCK-7®, OR KEYLESS SECURITY™

A one color, one side imprint is FREE on orders for 25 or more bags. For less than 25 of these bags, an imprinting charge applies. For a second color or a second location (for example, two colors one side or one color front and back) or a third color or third location (for example, three colors one side, or two colors front and one color on back), visit [www.arifkin.com](http://www.arifkin.com) and click on "Personalization" for charges that apply. If you are interested in a fourth color/location, please submit artwork and call for a quote.

### FOR NON-LOCKING BAGS

A one color, one side imprint is FREE on orders for 250 or

more bags. For less than 250 of these bags, an imprinting charge applies. For a second color or a second location (for example, two colors one side or one color front and back) or a third color or third location (for example, three colors one side, or two colors front and one color on back), visit [www.arifkin.com](http://www.arifkin.com) and click on "Personalization" for charges that apply. If you are interested in a fourth color/location, please submit artwork and call for a quote.

### WINDOWS

Framed window name plates can be used alone or together with embroidery or imprint for easy identification of bags in a complex system. Twin Window includes up to two lines of type and a bag number with bar code equivalent. Framed windows for an ID tag or business card can be added to most bags.





# color guide

Color number indicates specific material and color combination.  
Note: It is not always possible to duplicate fabric shades exactly. Actual colors may vary slightly. Fabric sample swatches available upon request. If you do not see the color or fabric which matches your system requirements, please visit our website to see additional colors available.

## ARCO 600™

Vinyl-coated 600-denier polyester duck. Durable, water-resistant and abrasion resistant. May be imprinted or embroidered.

Red 8207	Burgundy 8254	Dark Green 8245	Nassau Blue 82NB	Yale Blue/Navy 82YB	Purple 8257	Black 8304

## ARCODUCK™ II

Outer layer of vinyl-coated 600-denier polyester duck bonded to a polyester fabric with a moisture proof inner liner. Adds to the abrasion resistance of ARCO 600™. May be imprinted or embroidered.

Red 8107	Burgundy 8154	Dark Green 8145	Nassau Blue 81NB	Yale Blue/Navy 81YB	Purple 8157	Black 8104

## LEATHERETTE

Vinyl coating applied to fabric base. Easily cleaned with soap and water. Silk screen imprinting only.

Scarlet 3049	Orange 300R	Bright Yellow 3020	Emerald Green 3042	Royal Blue 30RB	Black 3004	White 3046

## NYLOTOP® 2000

A Rifkin fabric development. Layers of 70 denier vinyl-coated Nylon and polyester fabric bonded together with a moisture proof inner liner. Water-resistant. May be imprinted or embroidered.

Red 8307	Burgundy 8354	Emerald Green 8342	Nassau Blue 83NB	Yale Blue 83YB	Purple 8357	Black 8304

## NYLON

200-denier fabric with water-resistant urethane coating. Silk-screen imprinting only.

Red 1007	Burgundy 1054	Emerald Green 1042	Nassau Blue 10NB	Yale Blue 10YB	Black 1004	White 1046

## CORDURA® PLUS

The look and feel of cotton duck with the superior performance of nylon. High abrasion resistance. Urethane coating. May be imprinted or embroidered.

Red 4007	Burgundy 4054	Chocolate 4015	Spruce Green 4062	Blue 4008	Navy 4025	Black 4004

ORDERS & INQUIRIES TOLL FREE 800.458.7300 | FAX 800.825.8284 | VISIT OUR WEB SITE AT [www.arifkin.com](http://www.arifkin.com)



# zippers



## NYLON ZIPPER

Made of a solid coil. Advantageous in high volume operations where bag handling ease is crucial. Not recommended for high security applications.

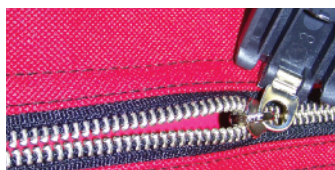


## 10mm BRASS ZIPPER

Extra strength and smooth operation. Standard on Rifkin Heavy-Duty Courier Bags and Fireshield Courier Bags.

## WHAT IS A CLOSE TOLERANCE ZIPPER?

Zippers are called close tolerance due to the number of teeth per inch and the pitch or angle of these teeth. The benefits: difficult to pop open to gain access; virtually impossible to put back together, thus showing evidence of tampering.



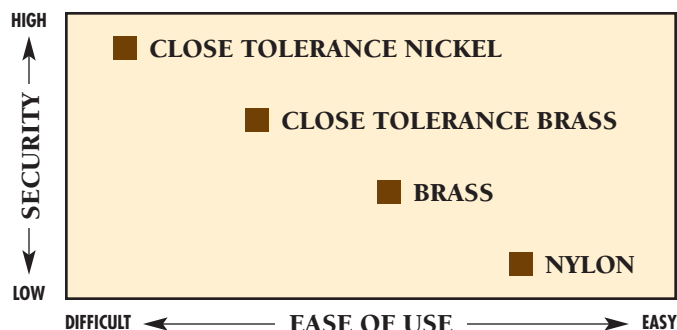
## CLOSE TOLERANCE BRASS ZIPPER

A security zipper style standard on Rifkin bags with Keyless Security™. A combination of smoother operating brass and close tolerance construction.



## CLOSE TOLERANCE NICKEL ZIPPER

Standard on Rifkin Safety Sacs®, our locking night deposit bag. The combination of hard metal (nickel) with close tolerance construction makes this the most secure zipper on the market.



See [www.arifkin.com/security](http://www.arifkin.com/security) for further details about our bag closures.

## TERMS

Net 10 Days, F.O.B. Shipping Point

## POLICIES

### Rifkin Bag Products

To qualify for quantity pricing, bags must be identical in material and color and they must have identical imprinting or embroidery. Styles may not be combined for quantity pricing. For multiple colors, color assortment charges may apply. Every effort will be made to ship the exact quantity of a printed order. Standard industry practice for printed products, however, provides a manufacturing allowance of +/-3% of the quantity ordered. It is our policy to ship and invoice all finished products to the customer.

### Rifkin Stock Bags

We maintain an inventory of only those specific styles, sizes, fabrics and colors listed **All other bags are custom-manufactured to order and may not be returned.** When Stock Bags are returned, a 15% re-stocking charge applies.

### Rifkin Non-Bag Products

You must be completely satisfied with the items purchased, or we will exchange the item, refund the purchase price or credit your account, as you wish. This policy applies provided the merchandise is returned within 30 days of receipt in re-sale condition. Any merchandise made to special order, and those items printed or engraved to your specifications may not be returned or exchanged.

### Return Policy

If you need to return an item, return authorization is required. Please contact our representative in your area or our Customer Service Department at 800-458-7300 for assistance. Return merchandise should be shipped to: A. Rifkin Co. 1400 Sans Souci Parkway Wilkes-Barre, PA 18706 or to the location specified by our Customer Service representative when you receive your Return Authorization. All prices and specifications in this catalog are subject to change without notice. All orders are subject to the approval of Rifkin and are not binding until accepted by Rifkin. Rifkin reserves the right to refuse any order at any time. All orders are subject to availability of materials and component parts and Rifkin shall not be liable for inability to ship any order(s) due to material or parts shortages.

### New Accounts

We will approve and process immediately all orders from customers with a satisfactory credit rating from D&B. We require payment by credit card or check prior to processing orders from all other customers. If you are not listed in D&B or wish to establish an open account with our company, please contact Customer Service at 800-458-7300 to request a credit application.

### Our Guarantee

We are dedicated to providing you, our customers, with high quality products. We guarantee that the materials and workmanship used for each of our products will be of excellent quality and that they will serve to the satisfaction of our customers.



# index

Arco ID™ Tamper-Evident Labels	8	Money/Valuables Bag, Locking	5
Arcolock-7®	4	Plastic Seals	8
ArcoTrack™ GPS Tracker	6-7	Pull Seals	8
Art Transport Bag, Keyless Security™	3	Rifkin Safety Sac®	5
Cash Box, Jumbo	9	Rolling Supply Bag, Keyless Security™	3
Courier Sac, Locking, Heavy Duty	5	Seals	8
Custom Personalization	9	Seals, Keyless Security™	2
GPS Tracking System	6-7	Secur-a-file™	3
Heavy-Duty Courier Sac, Locking	5	Stock Bags	5
Imprinting, Silk-Screen	9	Tamper-Evident Labels, Arco ID	8
Jumbo Cash Box	9	Twin Windows	9
Keying Systems	4	Windows	9
Keyless Security™ Transport Bags	3		
Keyless Security™ Art Transport Bags	3	Color Guide	10
Keyless Security™ Mini Padlock	8	Material Guide	10
Keyless Security™ Rolling Supply Bag	3	Terms & Policies	11
Keyless Security™ Seals	2	Zipper Guide	11
Keys	4		
Labels, Tamper-Evident	8		
Locking Heavy-Duty Courier Sac	5		
Locking Money Bags	5		
Mini Padlock, Keyless Security™	8		

Prices effective: February 15, 2011

ORDERS & INQUIRIES TOLL FREE 800.458.7300 | FAX 800.825.8284 | VISIT OUR WEB SITE AT [www.arifkin.com](http://www.arifkin.com)

**A. RIFKIN Co.**  
Established 1892

A. Rifkin Co.  
1400 Sans Souci Parkway  
P.O. Box 878  
Wilkes-Barre, PA 18703

PRESORTED  
STANDARD  
U.S. POSTAGE  
**PAID**  
WILKES-BARRE, PA  
PERMIT NO. 16