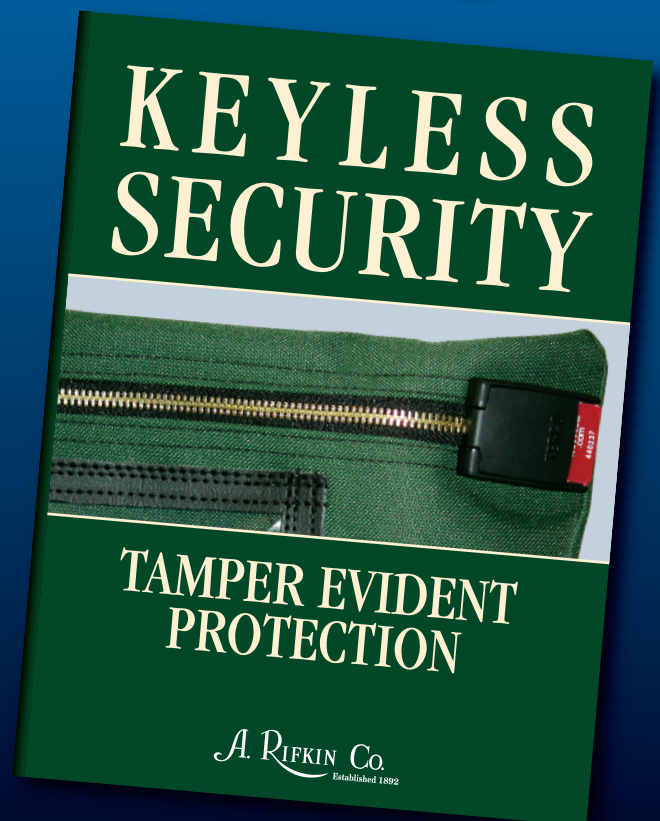
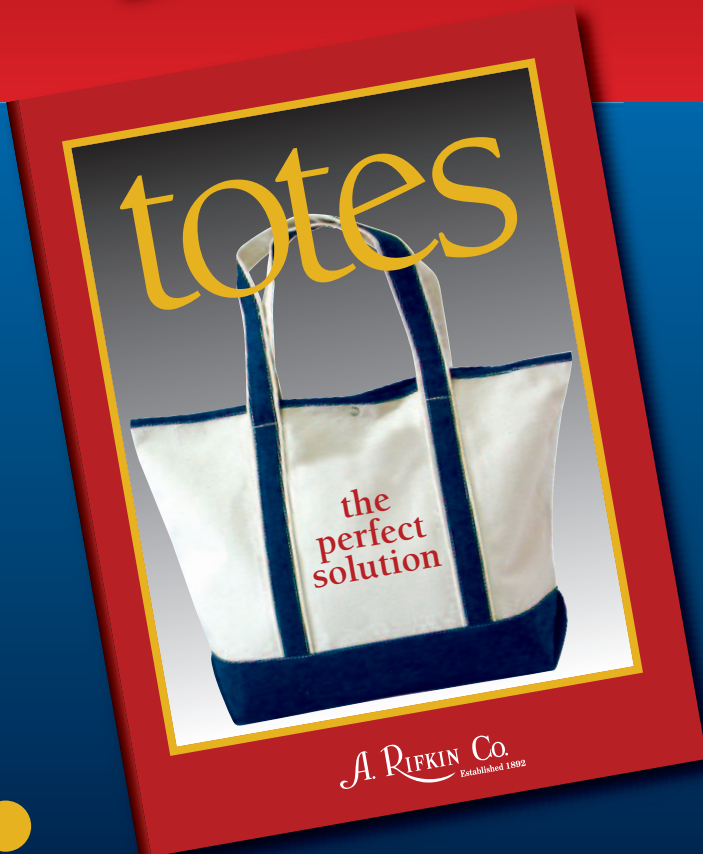
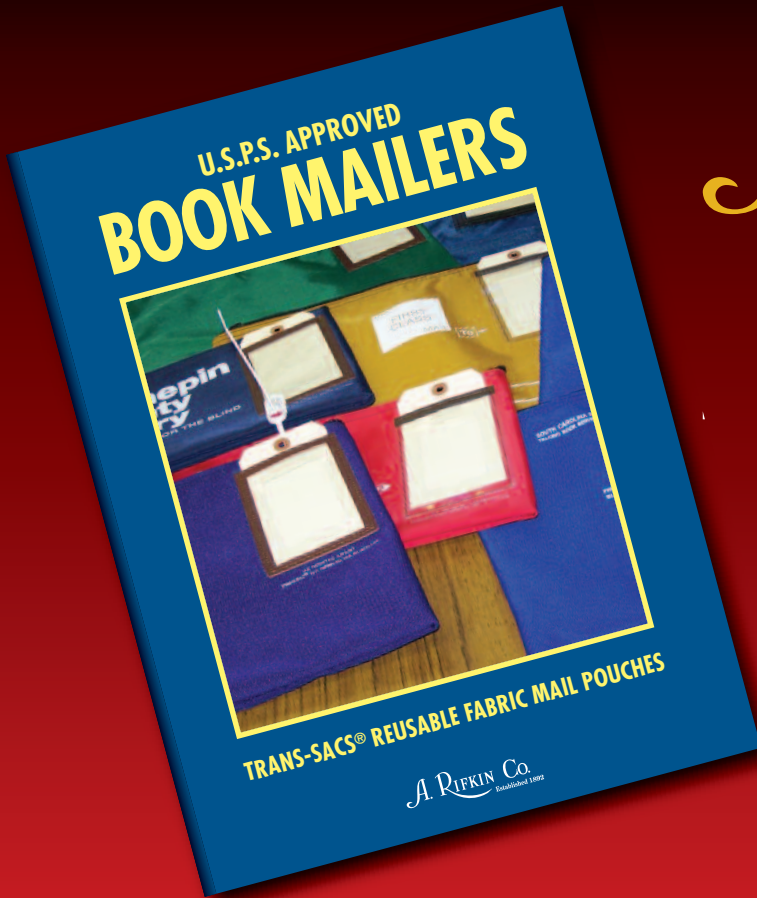


Ask for our
Current Price List
or visit www.arifkin.com

A. RIFKIN Co.

Established 1892

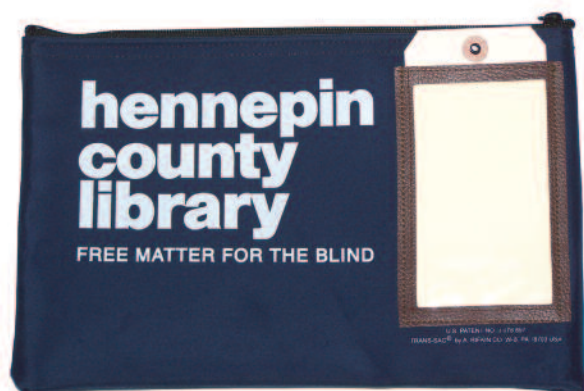


Library Bag Catalog



book mailers

**POST OFFICE-
APPROVED
REUSABLE
FABRIC
ENVELOPES
FOR
INTER-LIBRARY
LOAN OR
BOOKS-BY-MAIL
PROGRAMS**



U.S. Patent No. 4153090



MORE ECONOMICAL THAN “ONE TRIP” PAPER ENVELOPES

Reusable fabric pouches survive hundreds of round trips. Your Choice of Fabric Weight...Nylon, Arco 600™ (polyester duck) and Nylotop® 2000 (laminated Nylon) materials meet your mailing protection needs. Maximum Strength...holds up to 5 times as much as paper. All materials are water-resistant.

FASTER HANDLING AND DISTRIBUTION

Color Coded...for instant recognition.
Framed Window for Reversible Address Tag...for fast return.
Can be imprinted with your return address/logo/program identification.

For information about custom silk-screen imprinting, see page 11. Trans-Sacs are available in a wide variety of sizes in both flat and expandable styles. Trans-Sacs designed for the U.S.P.S. are equipped with a Framed Post Office Cut-Out Window (3-5/8" x 5-3/4") in the upper right corner.

Other styles designed for internal or courier use may include Framed or Solid Windows in other positions. Please contact our representative in your area or our Customer Service Department to discuss the design that meets your needs.

ORDERS & INQUIRIES TOLL FREE 800.458.7300 | FAX 800.825.8284 | VISIT OUR WEB SITE AT www.arifkin.com



**EXPANDABLE TRANS-SAC®
MAILING ENVELOPES**

**FLAT TRANS-SAC®
MAILING ENVELOPES**

trans-sacs

Go Green with Reusable Book Mailers

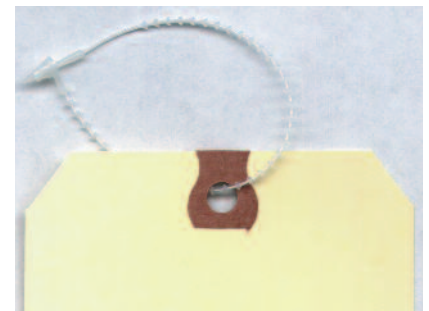
accessories

SECUR-A-TIES

5" long. Looped through Trans-Sac eyelet and sealed. Used to attach address label to Sac.
(Minimum order 1,000.)
Approx. Ship. Wt. 3 lbs. per 5M

SHIPPING TAGS, Size #8

Fit into Framed P.O. Cut Out Window (3-5/8" x 5-3/4") for addressing Trans-Sacs.
(Minimum order 200 tags.)
Approx. Ship. Wt. 3 lbs. per 200 tags





keyless security



U.S. Patent Pending

TO SECURE THE BAG

- Insert all materials to be transported into the Keyless Security™ Bag.
- Fill in date, delivery location, and seal number on provided routing card. Insert card into the clear window which is accessible only through the interior of the pouch.
- Pull the zipper completely closed. Hold chamber lid at a 45° angle, push back and down until it snaps into place.
- To lock, insert seal's twin arrowheads into the two small rectangular openings and push until they click into place.

TO OPEN THE BAG

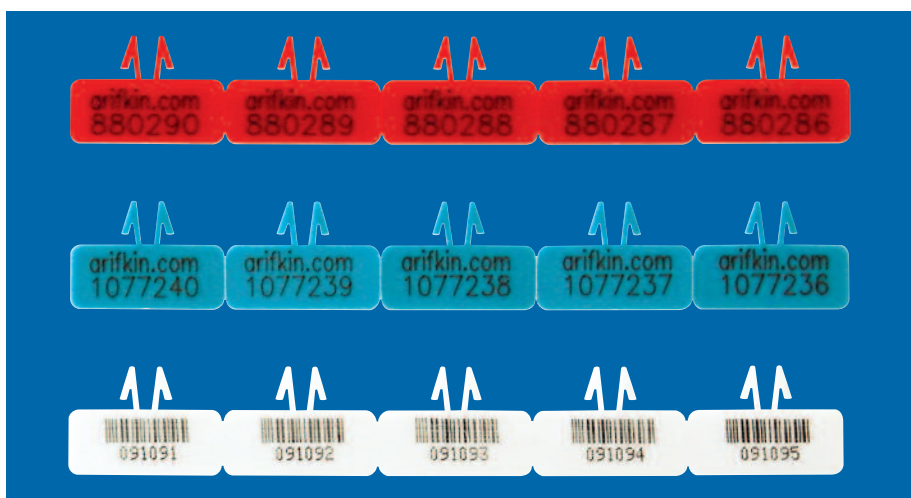
- Verify that the seal number matches the documented number on the routing card. Confirm the seal has not been broken or tampered with during transport.
- To open, utilizing the indent under the red seal, lift seal until it breaks.
- Then using the second indentation, lift up the chamber lid, unzip bag. Make sure all seal pieces are removed.
- Remove contents and reuse pouch.



U.S. Patent Pending



U.S. Patent Pending



U.S. Patent Pending

CHAMBER SEALS

Tamper evident seals for all Rifkin bags fitted with our chamber technology. Available in white with bar coded numbers or standard red (numbered only). All seal numbers are unique and non-duplicated. (Up to 10 million quantity.)

ORDERS & INQUIRIES TOLL FREE 800.458.7300 | FAX 800.825.8284 | VISIT OUR WEB SITE AT www.arifkin.com



PROTECT VALUABLE AND CONFIDENTIAL MATERIALS WITH TAMPER-EVIDENT MAIL POUCHES



KEYLESS SECURITY™ EXPANDABLE TRANSPORT

Just zip the bag and secure with numbered keyless seal for tamper-evident protection. Framed window holds 3" x 5" card that is inserted from inside bag for identification security.

MAILSAFE™ MAIL SAC W/ KEYLESS SECURITY™

Used for round-trip mail either through US Postal Service, internal couriers or contracted courier services. Accommodates letter size mail. Postage meter tapes can be affixed to leather tag. Address tag is inserted from inside Sac (for identification security).



SECUR-A-FILE™ (KEYLESS SECURITY™)

Provides keyless, tamper-evident protection of your confidential documents, store your sensitive paperwork along with non-sensitive files in any filing cabinet. Designed for legal size file cabinets. Large capacity for thick files or printouts. Heavy-duty coated suspension rods.

U.S. Patent No. 6039473

ROLLING SUPPLY BAG W/ KEYLESS SECURITY™

Pack up to 50 pounds of supplies or books, insert the Keyless Security™ seal, extend handle and wheel it wherever you need it.

2-WHEEL STYLE

Inline skate wheels provide skid protection. Flip-top design allows full access to contents. When bag is not in use, telescoping handle system hides below for easy storage. Feet on bag end/bottom so bag can be rested or stored in standing position. Nassau Blue Bag includes security window (FWNP006) on lid to hold a 3" x 5" ID card or tag.

U.S. Patent No. 7273139



4-WHEEL STYLE

Four-wheel design for easy maneuvering. Allows contents to stay flat in transit. Retractable pull handle stops at a 45 degree angle - no stooping to retrieve handle. Nassau Blue Bag includes security window (FWNP006) on front of bag to hold a 3" x 5" ID card or tag.



ORDERS & INQUIRIES TOLL FREE 800.458.7300 | FAX 800.825.8284 | VISIT OUR WEB SITE AT www.arifkin.com



POST OFFICE-TYPE MAIL BAGS

Sturdy, Large Capacity Bags for Packages available in Nylon and ArcoDuck™ II.

Ideal for consolidating and transporting mail, including packaged books and loan materials. Bags can be imprinted for library or branch identification. (Certain minimums apply for free imprinting. See page 11 for details.) For individualized customer information, Framed Window Name Plates can be added at an additional charge. (See page 11.) Price includes nylon sash cord and locking metal rope clamp. A Plastic Locking Rope Clamp can be substituted for the Locking Metal Rope Clamp on request at no additional charge.

A Vina-Hide Strap closure in place of the sash cord and metal clamp can be requested at an additional charge per bag.



MAIL BAG WITH VINA-HIDE SKIRT



KEYLESS SECURITY™ MINI PADLOCK

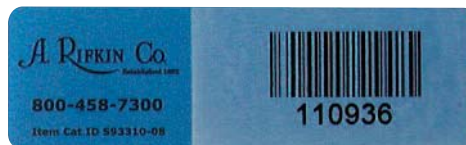
KEYLESS SECURITY™ SEALS FOR MINI PADLOCK

Standard padlock keys and combinations can be stolen but there is no way to open a Rifkin Mini Padlock without leaving evidence that the contents have been breached. A broken, missing or different numbered seal indicates that your property was opened.

ALL RIFKIN SECURITY SEALS ARE EASY-TO-USE AND PROVIDE A VISUAL DETERRENT TO WOULD-BE SNOOPS AND CLEAR EVIDENCE OF ANY TAMPERING.

ARCO ID™ TAMPER-EVIDENT LABELS

These 1" x 3" seals are easy to apply, easy to remove and leave no residue. Tamper Evident Labels can be used on cash boxes, file cabinet drawers, computer hard drives and more.



ORDERS & INQUIRIES TOLL FREE 800.458.7300 | FAX 800.825.8284 | VISIT OUR WEB SITE AT www.arifkin.com



OPEN TOP TOTES

Handy tote bags in natural 10 oz. Duck or bright Arco 600™. Bags can be silk-screen imprinted with your logo, special design or advertising message.
(See page 10 for details about silk-screen imprinting).



SNAP TOP TOTE STYLES

Snap Top Tote Bags are ideal for special programs, or employee gifts. The roomy (16" x 22" x 6.5") 16 oz. Natural Duck bag features your choice of Blue or Red skirt. These bags may be embroidered at an additional charge.



PROMOTIONAL TOTE

Black poly pro open top tote bag (**B15247-W10-0000**) made with square bottom (14" x 18" x 5") is ideal for library fundraisers.
Minimum order 500 bags; pricing includes 2 color imprint on 2 sides!



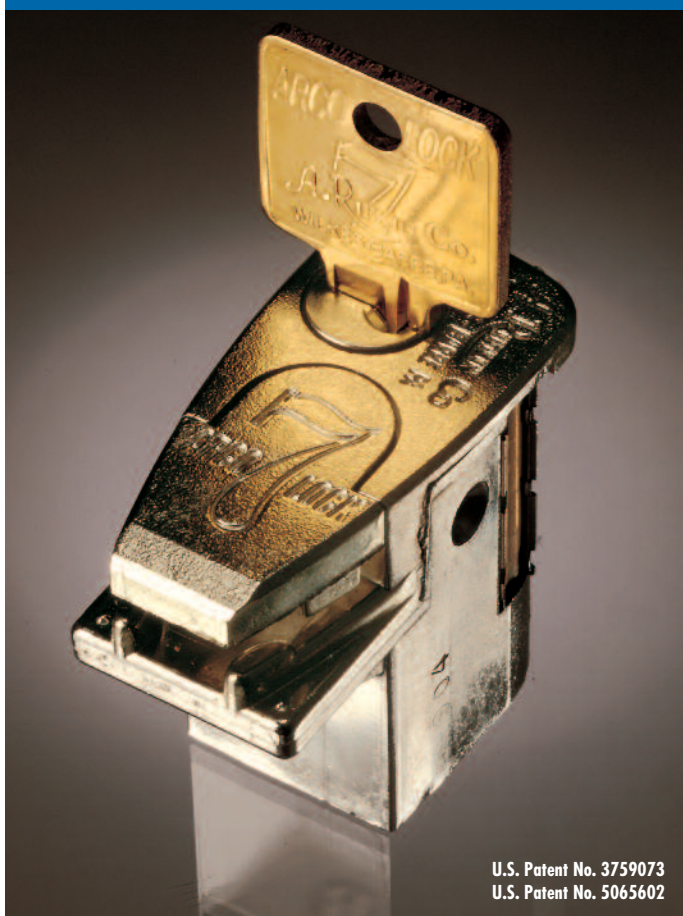
ZIPPER TOP TOTE

Handy 13" x 17" tote bag with nylon zipper made in sturdy ArcoDuck™ II. Shoulder length webbing handles make it easy to carry.



arcolock-7

MAXIMUM SECURITY

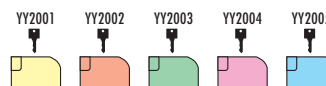


U.S. Patent No. 3759073
U.S. Patent No. 5065602

Rifkin's Arcolock-7® keyed bags are the #1 selling brand of security bags for government and financial institutions. Seven decades of research and continual improvement make these storage and transport bags the most reliable on the market. The Rifkin seven-pin tumbler lock mechanism is virtually pick-proof and is compliant with federal security regulations for transporting classified documents. Additionally, we offer keying options for more confident management of your secure transport operations.

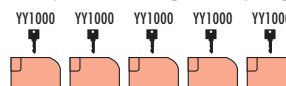
KEYED DIFFERENTLY

Keyed differently, each bag has its own key, different from all others, with no interchanges.



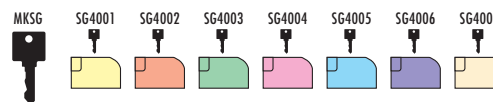
KEYED ALIKE

When Arcolock-7's are keyed alike, a single key pattern ("bitting") allows all key holders to open every bag in the system.



MASTER-KEYED

In master-keyed systems, each bag has its own key which is independent of other locks in the system. However, a single key opens all locks in that system.



EMERGENCY KEY REPLACEMENT SERVICE

Replacement keys are forwarded within 48 hours in cases of emergency. Large quantity key orders may take longer. (Please specify key number which is stamped on key and base of lock.) Replacement keys are additional.

| | | |
|-------------------------|-------|------------------------|
| KEYED DIFFERENTLY LOCKS | _____ | included in Sac Price. |
| KEYED ALIKE LOCKS | _____ | included in Sac Price. |
| MASTER KEYED LOCKS | _____ | additional per Sac. |
| REPLACEMENT KEYS | _____ | additional per Sac. |
| MASTER KEYS | _____ | additional per Sac.. |

**MADE EXCLUSIVELY FOR
A. RIFKIN COMPANY**

ORDERS & INQUIRIES TOLL FREE 800.458.7300 | FAX 800.825.8284 | VISIT OUR WEB SITE AT www.arifkin.com



SAFETY SAC® w/ ARCOLOCK-7®

Our high-security, fabric, lock bag is perfect for protecting cash and other valuables. Trusted by financial institutions throughout the country.



HEAVY-DUTY COURIER w/ ARCOLOCK-7®

Perfect for securely transporting large volumes of documents, valuable data files, artifacts and more. Sturdy webbing handles, reinforced side panels and bottom with brass plated studs. Built-in Arcolock-7® makes this bag secure.

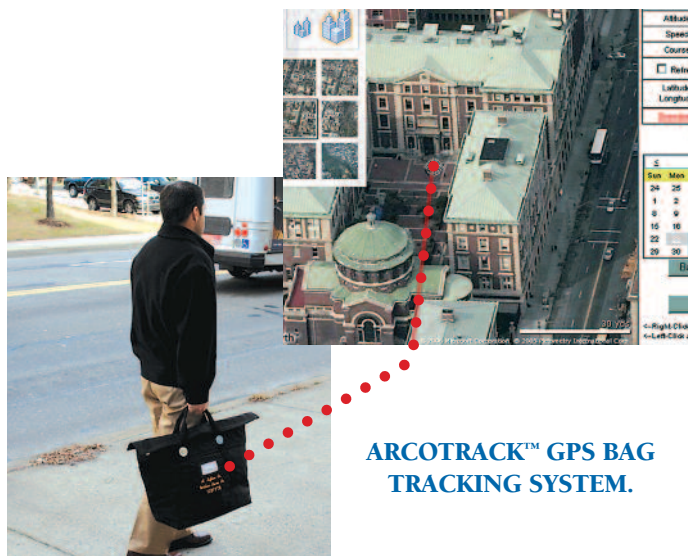


To maintain order when crowds reach the checkout desk, consider a **NEXT-IN-LINE (TENSABARRIER or ROPE & POST)** traffic control system from Rifkin.



JUMBO CASH BOX

Keep larger denomination bills and checks out of sight. Extra deep cash box features a standard size 7-compartment tray which can slide back and forth to expose storage area below.



ARCOTRACK™ GPS BAG TRACKING SYSTEM.

For transport of valuable literature, loaned artwork or original materials, consider a **RIFKIN FIRE-SHIELD COURIER BAG or ARCOTRACK™ GPS BAG TRACKING SYSTEM.**



RIFKIN FIRE-SHIELD COURIER BAG

Visit the Library Market section of www.arifkin.com or contact our Customer Service Department toll-free at 800-458-7300 for information about these and other products.

ORDERS & INQUIRIES TOLL FREE 800.458.7300 | FAX 800.825.8284 | VISIT OUR WEB SITE AT www.arifkin.com



color guide

MATERIAL COLOR GUIDE

Replace "cc" with
Arco 600™,
Arcoduck™ II,
Nylon or
Nylotop® 2000
color code.

Sample product
number B01652-
D10-83cc would be
B01652-D10-83YB
(83YB represents
Nylotop® 2000
Yale Blue)

ARCO 600™

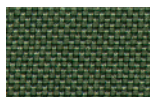
Vinyl-coated 600-denier polyester duck. Durable, water-resistant and abrasion resistant.
May be imprinted or embroidered.



Red
8207



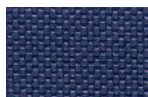
Burgundy
8254



Dark Green
8245



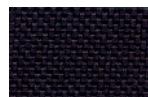
Nassau Blue
82NB



Yale Blue/Navy
82YB



Purple
8257



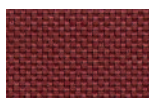
Black
8304

ARCODUCK™ II

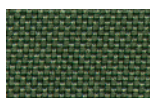
Outer layer of vinyl-coated 600-denier polyester duck bonded to a polyester fabric with a moisture proof inner liner. Adds to the abrasion resistance of ARCO 600™. May be imprinted or embroidered.



Red
8107



Burgundy
8154



Dark Green
8145



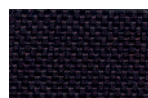
Nassau Blue
81NB



Yale Blue/Navy
81YB



Purple
8157



Black
8104

NYLON

200-denier fabric with water-resistant urethane coating.
Silk-screen imprinting only.



Red
1007



Burgundy
1054



Orange
100R



Emerald Green
1042



Nassau Blue
10NB



Yale Blue
10YB



Black
1004

NYLOTOP® 2000

A Rifkin fabric development. Layers of 70 denier vinyl-coated Nylon and polyester fabric bonded together with a moisture proof inner liner. Water-resistant. May be imprinted or embroidered.



Red
8307



Burgundy
8354



Emerald Green
8342



Nassau Blue
83NB



Yale Blue
83YB



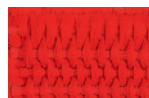
Purple
8357



Black
8304

WEBBING FOR HANDLES

If no handle color is specified,
Black will be supplied.



Red



Yellow



Pacific Blue



Black

Color number indicates specific material and color combination.

Note: It is not always possible to duplicate fabric shades exactly. Actual colors may vary slightly.

Fabric sample swatches available upon request. If you do not see the color or fabric which matches your system requirements, please contact us to discuss your needs.

ORDERS & INQUIRIES TOLL FREE 800.458.7300 | FAX 800.825.8284 | VISIT OUR WEB SITE AT www.arifkin.com



CUSTOM PERSONALIZATION

CUSTOM EMBROIDERY

Embroidered identification is FREE on all bags with an Arcolock-7®, and on the Rolling Supply Bag with Keyless Security™ (page 5). For all other non-locking bags or Keyless Security™ Bags, embroidered identification is available at an additional charge per bag. Bags made of Nylon and Leatherette may be imprinted only.

CUSTOM SILK SCREEN IMPRINTING

FOR BAGS WHICH INCLUDE AN ARCOLOCK-7®, OR KEYLESS SECURITY™

A one color, one side imprint is FREE on orders for 25 or more bags. For less than 25 of these bags, an imprinting charge applies. For a second color or a second location (for example, two colors one side or one color front and back) or a third color or third location (for example, three colors one side, or two colors front and one color on back), visit www.arifkin.com and click on “Personalization” for charges that apply. If you are interested in a fourth color/location, please submit artwork and call for a quote.

FOR NON-LOCKING BAGS

A one color, one side imprint is FREE on orders for 250 or more bags. For less than 250 of these bags, an imprinting charge applies. For a second color or a second location (for example, two colors one side or one color front and back) or a third color or third location (for example, three colors one side, or two colors front and one color on back), visit www.arifkin.com and click on “Personalization” for charges that apply. If you are interested in a fourth color/location, please submit artwork and call for a quote.

WINDOWS

Framed window name plates can be used alone or together with embroidery or imprint for easy identification of bags in a complex system. Twin Window includes up to two lines of type and a bag number with bar code equivalent. Framed windows for an ID tag or business card can be added to most bags.



TERMS AND POLICIES

TERMS

Net 10 Days, F.O.B. Shipping Point

POLICIES

Rifkin Bag Products

To qualify for quantity pricing, bags must be identical in material and color and they must have identical imprinting or embroidery. Styles may not be combined for quantity pricing. For multiple colors, color assortment charges may apply. Every effort will be made to ship the exact quantity of a printed order. Standard industry practice for printed products, however, provides a manufacturing allowance of +3% of the quantity ordered. It is our policy to ship and invoice all finished products to the customer.

Rifkin Non-Bag Products

You must be completely satisfied with the items purchased, or we will exchange the item, refund the purchase price or credit your account, as you wish. This policy applies provided the merchandise is returned within 30 days of receipt in re-sale condition. Any merchandise made to special order, and those items printed or engraved to your specifications may not be returned or exchanged.

Return Policy

If you need to return an item, return authorization is required. Please contact our representative in your area or our Customer Service Department at 800-458-7300 for assistance. Return merchandise should be shipped to: A. Rifkin Co. 1400 Sans Souci Parkway Wilkes-Barre, PA 18706 or to the location specified by our Customer Service representative when you receive your Return Authorization. All prices and specifications in this catalog are subject to change without notice. All orders are subject to the approval of Rifkin and are not binding until accepted by Rifkin. Rifkin reserves the right to refuse any order at any time. All orders are subject to availability of materials and component parts and Rifkin shall not be liable for inability to ship any order(s) due to material or parts shortages.

New Accounts

We will approve and process immediately all orders from customers with a satisfactory credit rating from D&B. We require payment by credit card or check prior to processing orders from all other customers. If you are not listed in D&B or wish to establish an open account with our company, please contact Customer Service at 800-458-7300 to request a credit application.

Our Guarantee

We are dedicated to providing you, our customers, with high quality products. We guarantee that the materials and workmanship used for each of our products will be of excellent quality and that they will serve to the satisfaction of our customers.

index

| | | | |
|--------------------------------------|-----|--|-----|
| Address Tags | 3 | Money Bags | 9 |
| Arco ID™ Label | 6 | Open-Top Tote Bag | 7 |
| Arcolock-7® | 8 | Personalization | 11 |
| Book Mailers | 2 | Post Office Style Mail Bags | 6 |
| Cash Box, Jumbo | 9 | Promotional Tote Bag | 7 |
| Colors | 10 | Reusable Mail Bags | 2-3 |
| Courier Bags, Locking | 9 | Rolling Supply Bag with Keyless Security | 5 |
| Expandable Mailer, Keyless Security™ | 5 | Seals, Keyless Security™ | 4 |
| Expandable Trans-Sac® Mail Pouches | 3 | Secur-a-File | 5 |
| Keying Systems | 8 | Secur-a-ties | 3 |
| Keyless Security™ Mini Padlock | 6 | Snap-Top Tote Bag | 7 |
| Keyless Security™ Seals | 4 | Tags, Address | 3 |
| Keys | 8 | Tamper-Evident Label | 6 |
| Locking Bags | 9 | Terms & Policies | 11 |
| Mail Bags, Post Office Style | 6 | Tote Bags | 7 |
| Mail Safe™ Mail Pouch | 5 | Trans-Sac® Mailing Pouches | 2-3 |
| Mailing Bags | 2-3 | Windows | 11 |
| Materials | 10 | Zipper Top Tote Bag | 7 |
| Mini Padlock, Keyless Security™ | 6 | | |

Prices effective: February 15, 2011

ORDERS & INQUIRIES TOLL FREE 800.458.7300 | FAX 800.825.8284 | VISIT OUR WEB SITE AT www.arifkin.com

A. RIFKIN Co.
Established 1892

A. Rifkin Co.
1400 Sans Souci Parkway
P.O. Box 878
Wilkes-Barre, PA 18703

PRESORTED
STANDARD
U.S. POSTAGE
PAID
WILKES-BARRE, PA
PERMIT NO. 16